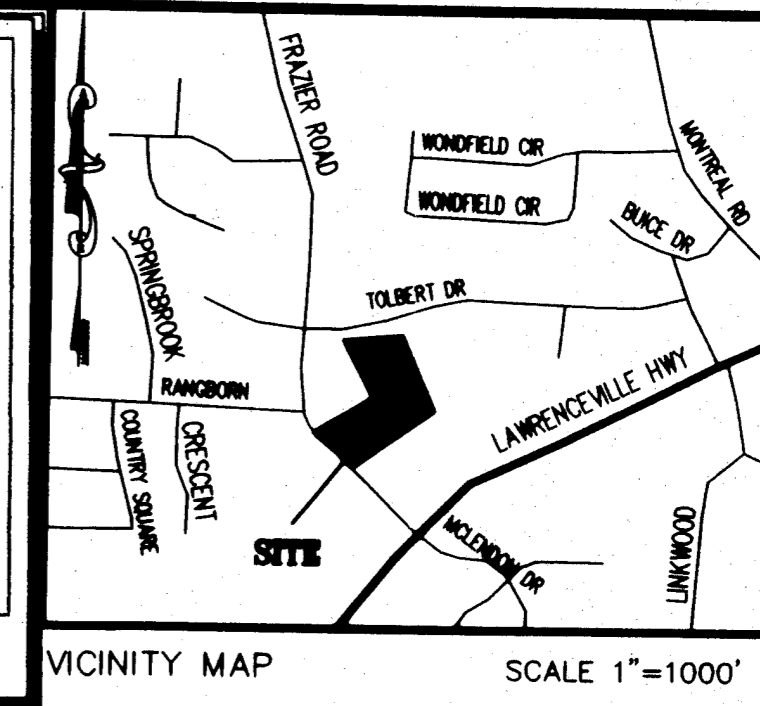
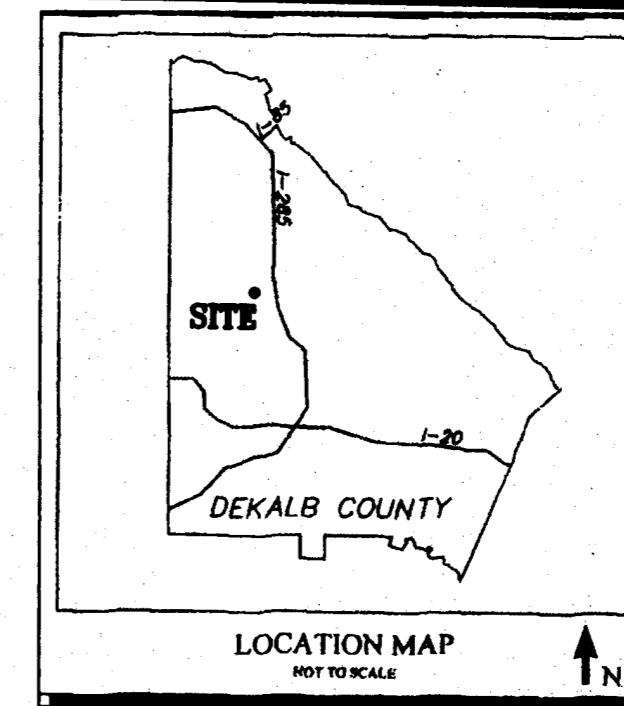


OWNER/DEVELOPER:
A J CAPITAL INVESTMENT, LLC
1235 HIGHTOWER TRAIL, SUITE 300
ATLANTA, GA 30350
(878) 878-6919
CONTACT: REZA MAJIDI

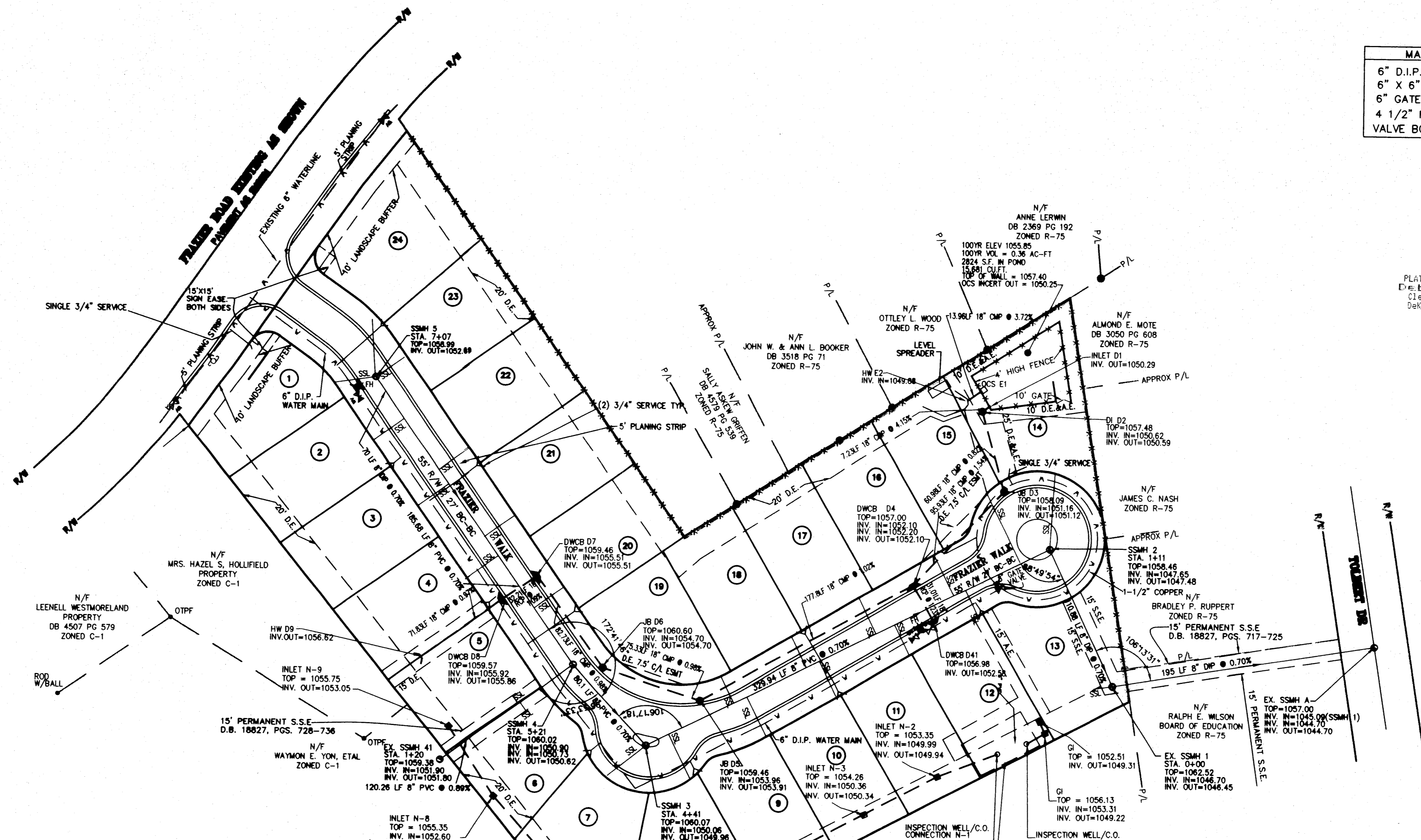
ENGINEER:
ACR ENGINEERING, INC.
3040 HOLCOMB BRIDGE ROAD
SUITE G-2
NORCROSS, GA. 30071
(878) 291-0000
CONTACT: ABBAS HEIDARI

STRUCT.	Upper	Lower	Drainage Area	INDV. WEIGHTED	INDV. TOTAL	Vel.	Size	Length	Slope	Pipe	Intensity	
			(ac.)	(C)	(cfs)	(fps)	(in)	(ft)	(%)		(in/yr)	
HW	D9	D8	0.80	0.80	0.50	0.50	3.62	3.62	3.8	18	73	0.87
DWCB	D9	D7	0.60	1.40	0.50	0.50	2.72	6.34	7.3	18	31	1.13
DWCB	D7	D6	0.60	2.00	0.50	0.50	2.72	9.06	3.9	18	83	0.88
JB	D5	D4	0.00	2.00	0.50	0.00	9.06	4.2	18	75	1.04	BCCMP
DWCB	D4	D3	0.40	2.81	0.50	0.50	1.81	12.73	4.5	18	96	1.05
JB	D3	D2	0.00	2.81	0.50	0.00	12.73	3.2	18	7	0.28	BCCMP
JB	D2	D1	0.00	4.20	0.50	0.00	12.73	2.5	18	31	1.00	RCP
DWCB	D4	D41	0.41	0.41	0.50	0.50	1.86	5.0	18	31	1.00	RCP
OCS	E1	E2	SEE HYDROISEE HYDRO	N/A	N/A	4.60	4.60	4.4	18	26	0.50	RCP

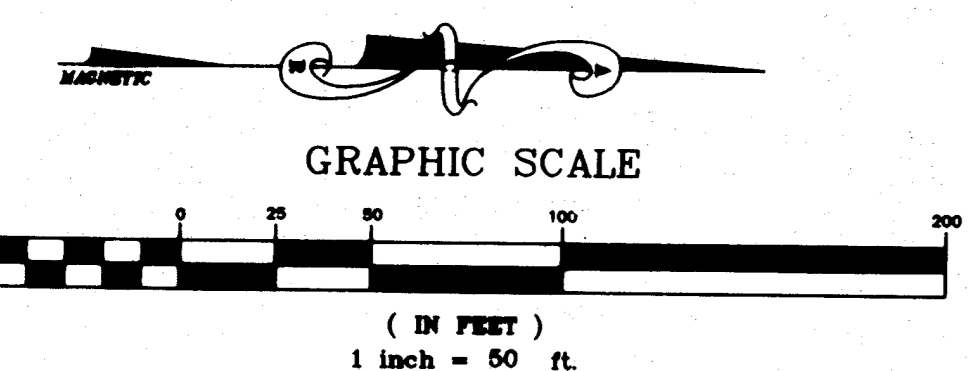
STRUCTURE	INVERT IN	INVERT OUT
HW D-9	N/A	1056.82
DWCB D-8	1055.92	1055.86
DWCB D-7	1055.51	1055.51
JB D-6	1054.70	1054.70
JB D-5	1053.96	1053.91
DWCB D-4	1052.10	1052.20
DWCB D-41	N/A	1052.58
JB D-3	1051.16	1051.12
DI D-2	1050.62	1050.59
INLET D-1	1050.29	N/A



MATERIAL/DESC	QUANTITY
6" D.I.P. WATER MAIN	767 LF
6" X 6" T.S.&V.	1
6" GATE VALVE	3
4 1/2" FIRE HYDRANT	2
VALVE BOX 6"	2



PLAT BOOK 220 Pg 74
Debra DeBerna
Clerk of Superior Court
DeKalb County, Georgia



- LEGEND**
- SP - IRON PIN FOUND (o)
 - PS - IRON PIPE SET (o)
 - CMF - CONCRETE MANHOLE FOUND (o)
 - CMSE - CONCRETE MANHOLE SET (o)
 - N/F - RIGHT OF WAY
 - STA - STATION NUMBER
 - LL - LAND LOT LINE
 - C/L - CENTERLINE
 - PL - PROPERTY LINE
 - BM - BENCHMARK
 - PT - POINT OF TANGENCY
 - PC - POINT OF CURVATURE
 - PI - POINT OF INTERSECTION
 - ELEVATION (ELEV.)
 - B/L - BUILDING LINE
 - MB - MANSION
 - SE - SUBGRADE ELEVATION
 - PL - PROPERTY CORNER
 - PO - POLE
 - TL - TELEPHONE LINE
 - TV - TELEVISION LINE
 - FL - FIBER OPTIC LINE
 - SL - SANITARY SEWER LINE
 - SE - SANITARY SEWER EASEMENT
 - MS - MANHOLE
 - GL - GAS LINE
 - WL - WATER LINE
 - PL - PLUMBING STRIP
 - FL - FIRE LINE
 - F.H. - EXIST. FIRE HYDRANT (o)
 - F.A. - PROP. FIRE HYDRANT (o)
 - WM - WATER METER (o)
 - SL - STORM SEWER LINE
 - SI - STORM SEWER EASEMENT
 - Y - YARD INLET
 - DI - DROP INLET
 - CI - CATCH BASIN
 - MI - HEAD MANHOLE
 - JB - JUNCTION BOX
 - DE - DRAINAGE EASEMENT
 - PM - SEWER FORCE MAIN
 - DE - DRAINAGE EASEMENT
 - CO - CLEAN OUT
 - CM - CORRUGATED METAL PIPE
 - RC - REINFORCED CONCRETE PIPE
 - VCP - VITRIFIED CLAY PIPE
 - RP - RIGID POLYPROPYLENE PIPE
 - PVC - POLYVINYL CHLORIDE PIPE
 - CP - CLAY AND GUTTER
 - F.L.M. - FEDERAL INSURANCE RATE MAP
 - P.O.B. - TRUE POINT OF BEGINNING
 - P.O.R. - POINT OF BEGINNING
 - Q.L. - QUARTER SECTION
 - TL - TRAIL LINE
 - BR - BRANCH
 - PC - PROPOSED CENTERLINE (DASHED)
 - PI - PROPOSED CENTERLINE (SOLID)
 - TC - TOP OF CURB ELEVATION
 - TR - TRANSVERSE POINT
 - LP - LIGHT POLE (o)
 - MT - MARKED TREE
 - SL - SANITARY SEWER LATERAL

WATER & SEWER AVAILABILITY ACKNOWLEDGEMENT

We, the undersigned, hereby state that all lots shown on the plan for the project known as Frazier Walk lying in Land Lot 146 of the 1872 District, DeKalb County, Georgia, are provided with services for connection to the public water and Sanitary sewer systems.

This the 10 day of March, 2010.

[Signature]
OWNER

[Signature]
ENGINEER/SURVEYOR/CONTRACTOR

THIS IS TO CERTIFY THAT THIS REVISION IS MADE BY AND WITH THE KNOWLEDGE OF THE UNDERSIGNED SURVEYOR AND IS IN COMPLIANCE WITH THE APPLICABLE LAWS OF THE STATE OF GEORGIA.

[Signature] 1263
Reg. Land Surveyor Registration No.

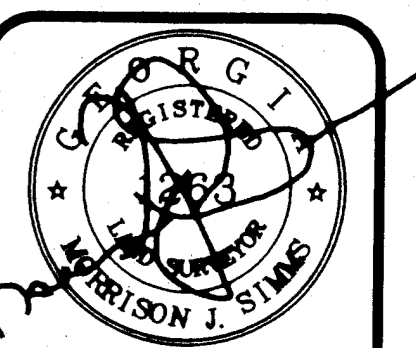
REVISION # 1 REVISED JUNE 13, 2011
THIS PLAT SUPERCEDES A PORTION OF THE PLAT RECORDED IN PLAT BOOK 217 PAGE 38 AND 39. THE PURPOSE OF THE REVISION IS TO: ADD STORM PIPE AND DRAINAGE EASEMENT REAR OF LOTS 5-13, ALSO ADD 15' ACCESS EASEMENT BETWEEN LOT 12 AND 13.

THIS REVISED PLAT HAS BEEN SUBMITTED TO THE CHIEF EXECUTIVE OFFICER OF DEKALB COUNTY, GEORGIA AND HAS BEEN APPROVED AS REQUIRED BY STATE LAW AND COUNTY CODES AS MEETING ALL CONDITIONS PRECEDENT TO RECORDING IN THE SUPERIOR COURT OF THIS CIRCUIT. THIS PLAT IS HEREBY APPROVED SUBJECT TO ANY PROTECTIVE COVENANTS SHOWN HEREON.

DATED THIS 21 DAY OF JUNE, 2011
By Direction: *[Signature]*
W. Burrall Ellis, Chief Executive Officer, DeKalb County, Georgia

ACR ENGINEERING, INC.
ATLANTA COMMERCIAL & RESIDENTIAL ENGINEERING
3040 HOLCOMB BRIDGE ROAD
SUITE G-2
NORCROSS, GA 30071
TEL: (878) 291-0000
FAX: (878) 291-6887

FINAL PLAT
FOR
FRAZIER WALK
(A.K.A. ROSHAN SUBDIVISION)
DEKALB COUNTY, GEORGIA



No.	Revision/Issue	Date	By	Check	Appr.
1	COUNTY SUBMITTAL	01/12/10			
2	ADD STORM PIPE & EASEMENT REAR OF LOTS 5-13 AND ACCESS EASEMENT BETWEEN LOT 12 & 13	6/13/2011			

LAND LOT(S):	146
DISTRICT:	1872
COUNTY:	DEKALB
STATE:	GEORGIA
DESIGNED:	JC
DRAWN:	JC

DRAWING:	FINAL-080395	Sheet	2
PREPARED:	FINAL PLAT		
DATE:	01/12/10		
SCALE:	1"=50'		
BY:	N/A		